



National Railway Historical Society St. Louis Chapter

P.O. Box 220168 • St. Louis, MO 63122-0168

WELCOME TO ST. LOUIS!

We invite you to attend the National Railway Historical Society Board of Director's Meeting for Fall 2009. Many of you have been in St. Louis before for NRHS Conventions and BoD meetings, so we have tried to select activities that have not been part of any of our prior meetings.

The Meeting will be held October 22 – 25. Please make your reservations to join us for a truly special time.

Preliminary schedule:

Thursday, Oct 22: 7:00 pm RVP Meeting

Friday, Oct 23: 7:30 am Tour U.P. Railroad DeSoto Car Shop / buffet lunch *
3:10 pm Staff Meetings
5:30 pm K-10's HO Gauge Model Train Layout (60'x81') *

Saturday, Oct 24: 8:00 am Tour of Gateway Rail Services *
2:00 pm Working Session
6:00 pm Cash bar and Hospitality
7:00 pm Banquet *

Sunday, Oct 25: ~~8:00~~^{8:30 am} Board of Directors' Meeting
Noon Adjournment

* = Separate fee. All tours have limited capacity

Al Weber
National Director

John Metzger
Chapter President

HOTEL INFORMATION

Our hotel is the Holiday Inn St. Peters, located at 4341 Veterans Memorial Parkway, St. Peters, MO. Reservations should be made directly with the hotel at 636-928-1500. Please mention NRHS to get our special rate. Our rate is \$72.00 per night plus tax. Room reservations must be made by **October 1** to guarantee the rate.

TRAVEL DIRECTIONS

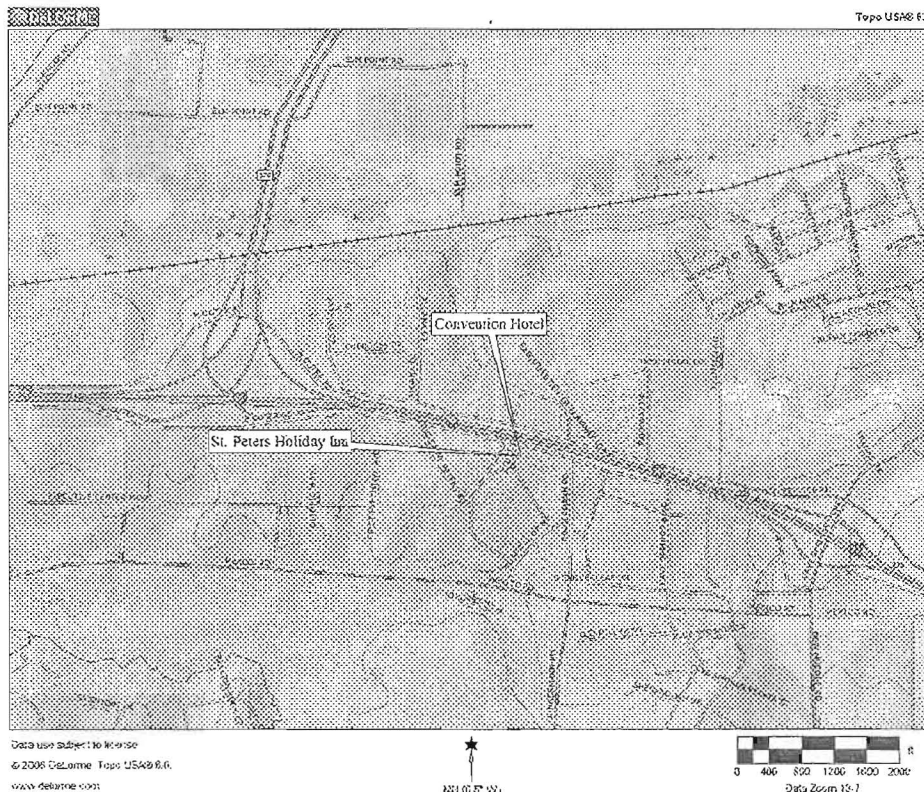
Our hotel is located about 15 miles west of Lambert St. Louis International Airport, off Interstate 70. Taxis are readily available at the airport.

For our guests arriving via Amtrak at the downtown St. Louis station, you may take the light rail (Metrolink station is located in the St. Louis Intermodal station, along with Amtrak) to the Airport.

For our guests travelling via automobile,

WESTBOUND: take I-70 West from St. Louis into St. Charles County, then continue about 4 miles to the Cave Springs Exit (Exit 225). Go **LEFT** across the bridge, then a quick **RIGHT** on the South Outer Road West (Veterans Memorial Parkway) about 1 mile, to the hotel on the **LEFT**.

EASTBOUND: take I-70 East to the Cave Springs Exit (Exit 225). Go **RIGHT** then a quick **RIGHT** on the South Outer Road West (Veterans Memorial Parkway) about 1 mile, to the hotel on the **LEFT**.



FRIDAY, OCTOBER 23, 2009 TOUR**Union Pacific Railroad Car Shop, DeSoto, Missouri**

The present day Union Pacific Railroad Car Shop, located in DeSoto, Missouri, has a rich railroad history. The history of the town didn't begin until the St. Louis, Iron Mountain and Southern Railway announced plans in 1851 to build a railroad from St. Louis to Iron County. In 1857 a station house was built for the railroad.

DeSoto's livelihood would become further entwined with the railroad when it agreed to donate land to the railroad and exempt it from taxes on any improvements if the railroad would build and maintain on the land the principal machine shops of their Northern Division. A "car works" department built and repaired passenger and freight cars and the machine shop repaired cars and engines. In addition to the approximately 400 men employed in these works there were about 150 road engineers and firemen who made DeSoto their home. In 1917 the railroad became part of the Missouri Pacific Railroad and later part of the Union Pacific Railroad.

Today, the Union Pacific Car Shop is the town's largest employer and is the company's largest shop. The facilities are located on approximately 360 acres in the heart of downtown DeSoto. About 350 people work at the site now. Some 1,200 to 1,600 freight cars per year go through the Car Shop for anything from minor to major repairs, rebuilding, upgrading and repainting.

Multilevel enclosed auto/truck carrier freight cars and container well cars are the most frequent cars going through the Car Shop now. On the container well cars UP owns the rack while TTX owns the body. One line at the Car Shop gets two cars a day. Average time is three to four days for a single car to get through the Shop.

The Arlington Hotel and Restaurant, DeSoto, Missouri (buffet lunch here)

It has taken more than one hundred and thirty years for the Arlington Hotel (first known as the De Soto House, when built circa 1860) to appear again in its magnificent Victorian style. It then was a three-story Hotel that catered to passengers of the St. Louis, Iron Mountain and Southern/Missouri Pacific Railroad running past its doors. Now known as the Arlington Bed & Breakfast Inn, this historic hotel is a DeSoto landmark.

This is the site of our all-you-care-to-eat buffet lunch, which includes your choice of all-you-care-to-drink coffee, tea, lemonade, or soft drinks (Pepsi products).

Railroad Employees' Memorial, DeSoto, Missouri

The histories of the St. Louis, Iron Mountain and Southern, the Missouri Pacific and the Union Pacific Railroads are incorporated into the memorial. The monument is dedicated to railroad employees—past, present and future. The site is impressive with its unique design, suggesting tracks (walkways) leading to a turntable (bridge walkway) and a roundhouse (small history/picture wall front). Also, a Missouri Pacific Railroad caboose adds a fitting backdrop to the memorial.

FRIDAY, OCTOBER 23, 2009 EVENING ACTIVITY**K-10's Model Trains, Maryville, Illinois**

The layout was built in a 60' x 81' room located next to a hobby shop inside a warehouse. The layout room includes a dispatcher and observation platform that is handicapped accessible. The layout utilizes digital command control and radio controlled throttles.

The layout includes three major railroads (ATSF, UP & SP) that all interchange with each other, two short lines, and five major industries. The ATSF includes a 255' double track main line and a 19-track yard with an average storage track length of 23'. The UP and SP loops are usually combined into a 550' single-track loop. The UP operation includes a nine-track yard with an average storage track length of 14'. The UP also includes a steel mill, ore mine and coal mine. The SP operation includes a 15-track yard with an average storage track length of 19'. The SP also serves a large back-in station, an ore dock and a paper mill. All three major railroads have an intermodal yard, fruit growers express warehouse, numerous grain elevators and an interchange track/yard with both of the other railroads.

Other features include 473 manual turnouts, 110' of hand painted backdrop, both screen wire and Styrofoam scenery, many commercially available buildings doubled or tripled in size, and unique bench work held up by 129 kitchen cabinets. Since the layout is so large, many unusual methods were employed to make trees, create a seamless backdrop and eliminate shadows.

You are welcome to bring any engines of your own to run on this layout. The only requirements are HO gauge, DCC, and in good running order.

We anticipate returning to the hotel about 9:00 pm – 9:30 pm.

SATURDAY, OCTOBER 24, 2009 ACTIVITY

Today, we will take a bus to the Gateway Rail Services Shops in Madison Illinois. Gateway Rail Services occupies a portion of the former Chicago & North Western's Madison yard – the southern terminus of the Litchfield and Madison Railway – the original St. Louis Gateway Route. Gateway specializes in passenger car repair.

Gateway IS an active repair and storage facility. While at the shops, we will be allowed into any cars and any shop areas that are there. This may allow you to see the interiors of many fine premier-class cars, without paying for premier-class service. Please note that we cannot guarantee which cars will be at the shop.

Some areas in the shop have asphalt floors, while other storage tracks are not paved. Please be sure your mobility can accommodate the gravel ballast.

SATURDAY, OCTOBER 24, 2009 EVENING ACTIVITY

This evening, we start our activities with a cash bar held in the Holidome near the registration area. We will then hold our banquet. After the meal, we will enjoy films provided by the St. Louis Chapter's own Axtell Kramer. Mr. Kramer is a retired chemistry professor and an active live steam locomotive builder. He will be showing a 16mm color film, "Passenger Trains Serving St. Louis in the Summer of 1969". This approximately 40 minute film is from his private collection. Mr. Kramer will narrate the film, and be able to discuss after the showing.

All banquet options include a salad, dessert, and coffee.

Banquet entrée options include:

1. Stuffed pork chop with apple walnut stuffing, au gratin potatoes, steamed broccoli spears, rolls and butter.
2. Chicken Cordon bleu, rice pilaf, rolls and butter
3. Herb crusted filet of salmon, garlic mashed potatoes, sautéed peppers, fresh green beans, rolls and butter

Please note on your registration form any special meal needs.

Terms and Conditions

The St. Louis Chapter of the National Railway Historical Society, Inc. (hereafter known as the Chapter) and its members shall not be held liable or responsible in any way as a result of sponsoring the Fall 2009 Board of Directors Meeting.

Participation in any event constitutes agreement that you will not hold the Chapter or its members liable for any injury, damages, loss, accident, or irregularity occasioned by vehicle defects, defaults, or carriers or their personnel, any additional expense due to delays, motive power failure, changes in service, illness, weather, strikes, quarantine, war or other causes.

The Chapter reserves the right to cancel the Event without notice. In such case, the Chapter's liability shall be limited solely to the Event fare paid. Handling and service charges, if any have been incurred, shall not be reimbursed. The Chapter shall not be liable for any lost tickets.

Please be at the check-in points no later than 10 minutes before departure to guarantee seat availability. No refunds will be made for missed events.

Physical Requirements

The excursions and attractions will require some walking and stair climbing. Persons having mobility impairments or requiring the use of wheelchairs will be required to provide their own attendants, if necessary, and the St. Louis Chapter does not permit its members to perform such a role. Mobility impaired persons are asked to contact us to discuss available accommodations prior to ordering.

Liability Release

All participants in the Union Pacific Railroad DeSoto Car Shop tour will be required to sign a Release of Liability and Indemnity Form before boarding the bus at the hotel. Please do not sign up for the tour if you will not feel comfortable signing this release. No one will be permitted on the tour without signing a release. No refunds will be given if you refuse to sign the release and are not allowed to go on the tour.

FALL 2009 Board of Directors Event Order Form
October 22 – 25, 2009
St. Louis Chapter, NRHS

NRHS Membership Number: _____

Name: _____
 (please print)

Address: _____

City/state/country/zip: _____

Telephone: day: _____ evening: _____

Email: _____

Badge information (please list all attendees):

Name as you want it to appear on badge	Chapter
_____	_____
_____	_____
_____	_____

Date	Event description	Price each	Number	Total
	Registration per family	30.00		30.00
Oct 23	U.P.RR DeSoto Car Shop Tour / lunch	60.00		
Oct 23	K-10 HO Gauge Railroad Layout	25.00		
Oct 24	Gateway Rail Services Tour	35.00		
Oct 24	Banquet – Stuffed Pork Chop	40.00		
	Chicken Cordon Bleu	40.00		
	Baked Salmon	40.00		
	Total:			

Payment by check or money order only (**payable to St. Louis Chapter NRHS**).

Mail order form with payment to:

St. Louis Chapter NRHS
 P O Box 220168
 St. Louis MO 63122

Orders must be received by October 15.

Change and cancellation policy: All changes must be accompanied by proper fee. If you must change or cancel your order, we must receive your request **in writing** no later than **October 10**. A \$30 processing fee will be charged for any changes or cancellations. Event fees will be refunded less the processing fess. **THERE WILL BE NO REFUNDS AFTER THE OCTOBER 10 DEADLINE.**