

LANCASTER CHAPTER, INC., NATIONAL RAILWAY HISTORICAL SOCIETY

**75th Anniversary – Fall 2010 Board Meeting
Hosted by Founding Chapter #1
Lancaster Chapter NRHS**

Thursday, November 4 – Sunday, November 7, 2010
Best Western Eden Resort Inn
Lancaster PA

Preliminary Preview

Arranging Your 75th Anniversary – Fall 2010 Board Meeting

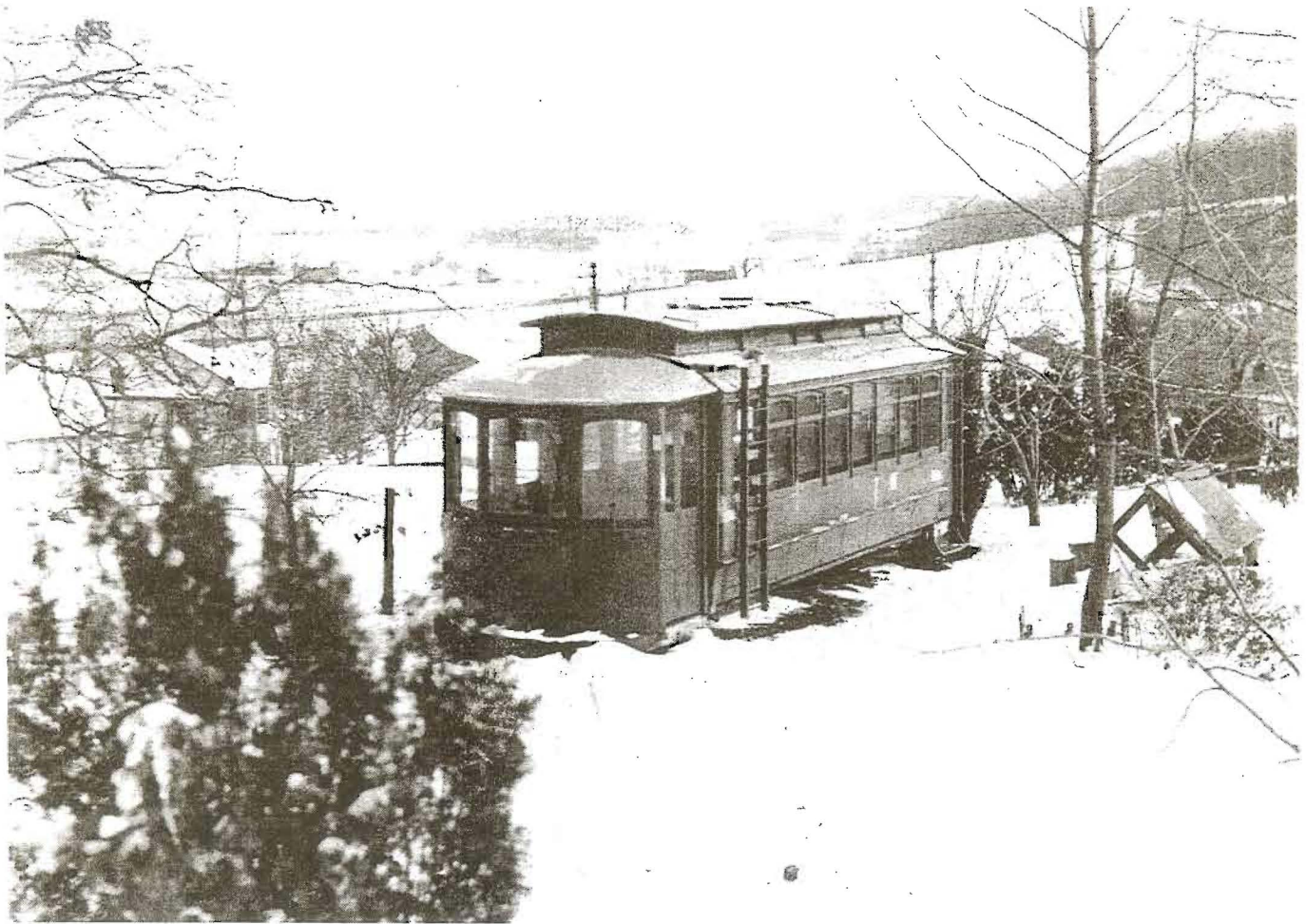
John D. Sweigart – NRHS Eastern Regional Vice President
Harold “Smoke” L. Shaak – Lancaster Chapter NRHS National Director
Dennis J. Allen – Committee Co-Chairperson
Thomas C. Shenk – Committee Co-Chairperson

75th Anniversary – Fall 2010 Board Meeting – NRHS Roots

The 75th Anniversary Fall Board Meeting will include a journey through time, as we explore the beginnings of the National Railway Historical Society. Tours include a visit to a restored, operational trolley of the type in which the original founders met in 1933 (see photograph on back of this page) when they formed the Lancaster (PA) Railway & Locomotive Historical Society. On October 2, 1935, at the last LR&LHS meeting at the Pennsylvania Station in Lancaster, a resolution was read dissolving the Society and establishing the Lancaster Chapter NRHS. Eleven days later, in Philadelphia, the national by-laws were approved, and the first two Chapters (Lancaster and New York) were admitted to NRHS.

Included in This Preview

- Fall meeting itinerary – Page 2
- Our host hotel – Page 2
- Transportation to Lancaster – Page 3
- Contact information – Page 3



Former **CONESTOGA TRANSPORTATION COMPANY** #124. Carbody on the property of Harry B. Baughey, Neffsville, PA. Used as a meeting place of the Lancaster Railway & Locomotive Historical Society and, later, the Lancaster Chapter, National Railway Historical Society. Car body was a single-truck city car replaced in service after the introduction of Birney cars. Located on property on west side of Route 501 (Lititz Pike) at the curve opposite the Mennonite Church. This photo was taken at the first meeting of the LR&LHS on December 29, 1933.

Photo by James P. (Jim) Shuman.

75th Anniversary – Fall 2010 Board Meeting
 Preliminary Preview Printed July of 2009
 Page 2

Fall Meeting Itinerary (Tentative)

- Thu Nov 4 Registration
 For early arrivals – Afternoon excursion to a regional railroad
- Fri Nov 5 Morning RVP meeting and registration
 Pennsylvania Dutch tour – Ride the Strasburg Rail Road
 Evening slide presentation at hotel
- Sat Nov 6 Journey through time as we explore our beginnings
 Tour the roots of the Society
 Afternoon board meeting work session
 Evening banquet in The Courtyard at the Eden Resort Inn
- Sun Nov 7 Morning board meeting

Our Host Hotel Best Western Eden Resort & Suites

www.edenresort.com

Services and Amenities

- Complimentary shuttle service from Lancaster Amtrak and Lancaster Airport
- Complimentary parking
- Garfield's Restaurant – Daily from 11:30 AM to 10:00 PM
 Sandwiches, light entrees, specialty pizzas, luncheon buffets
- Arthur's Terrace – Breakfast daily from 6:30 AM to 11:00 AM
 Open for lunch and dinner – Casual yet elegant
 Prime rib, seafood, pasta, chicken entrees
- Indoor pool and whirlpool – Fitness center

Guest Room Amenities Include

- Complimentary in-room safe
- Complimentary high-speed wireless Internet access
- Refrigerator and coffee maker
- Oversized work desk with "Smart Lamp" and ergonomic chair
- Hair dryer and full-size ironing board and iron
- Flat panel HDTV in-room pay-per-view movies
- Sitting area with comfortable chair

Hotel Reservation Information

- NRHS meeting rate of \$109.00 plus tax
- More information to follow with board meeting registration packet

Transportation to Lancaster

Lancaster is easily reached by Amtrak's Keystone service
Lancaster Airport "LNS" has 5 daily Cape Air flights from Baltimore Airport "BWI".

- Amtrak Keystone service offers numerous trains from Philadelphia's 30th Street Station.
30th Street Station has easy connections from the Northeast Corridor.
"Pennsylvanian" offers one daily trip from Pittsburgh.
Eden Resort Inn will provide complimentary shuttle service from Lancaster Amtrak.
- Cape Air Lancaster Airport's code is "LNS". Cape Air's web site is www.flycapeair.com.
Cape Air offers 5 flights daily from Baltimore Airport "BWI".
"BWI" has nonstop service to 66 destinations.
Cape Air offers through baggage check to "LNS" on most major carriers.
- Car Lancaster is less than a 3-hour drive from both New York City and Washington, DC.
- Rental Car Both Philadelphia "PHL" and Baltimore "BWI" airports are less than a 2-hour drive.

Contact Information

Lancaster Chapter NRHS 2010 Fall Board
c/o Thomas C. Shenk
798B New Holland Avenue
Lancaster PA 17602-2137
(717) 394-7000
tom@ridgeway.com (in subject line please reference NRHS)

Lancaster Chapter National Director
Harold "Smoke" Shaak
hlshaakjr@dejazzd.com

Committee Co-Chairperson
Dennis Allen
(717) 786-4932

**Thank You for Choosing Lancaster to Host the
75th Anniversary – Fall 2010 Board Meeting.**